

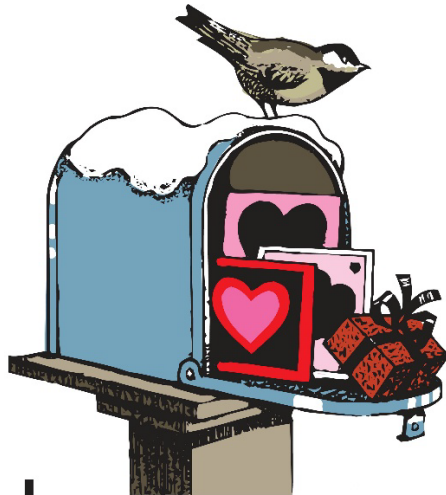
# PAUL'S PARISH NEWS



SAINT PAUL'S EVANGELICAL LUTHERAN CHURCH  
Breinigsville, PA

---

**FEBRUARY 2026**



# February

St. Paul's Evangelical Lutheran Church  
8227 Hamilton Boulevard  
Breinigsville, PA 18031  
Telephone: 610-398-7000

*PAUL'S PARISH NEWS* is published by St. Paul's Evangelical Lutheran Church

## The Pastor's Corner – DIDN'T WE JUST GET THE DECORATIONS OUT?

And we put them away either right after Christmas or just before New Years Day – we heard our mothers' say, "It's time to get back to normal." So, what is normal? Without the decorations? Was she aware we were in school all day and didn't really get to enjoy them until a day or two before December 25<sup>th</sup>? And then WOOOSH! Back into the boxes again until next year. Most of us were just beginning to soak in the theme of Christmas and then it's gone. And are we doing the same because it is a TRADITION that was taught to us without any understanding of why?

How many of us grew up hearing about or understanding what Epiphany is all about? Was that too churchy a word back then? EPIPHANY -- too hard to spell and to read it – and be able to pronounce it? How DO you say it? Ah, Little Christmas – we all heard about it without knowing what it really meant. Does that mean we were supposed to have two Christmases? How come we don't celebrate two Christmases if there is a big one on December 25<sup>th</sup> and a little one on Jan 6? As children, did we think we were being cheated out of another Christmas? Hm-m-m-m-m.

It took several hundred years for the protestant church to begin using the celebration of Epiphany. Too churchy? Maybe – of maybe associated with others who had a special way of celebrating the time that the protestant church was avoiding. The day of Epiphany is Jan 6<sup>th</sup>, - - 12 days after Christmas. It never moves and continues the Christmas celebration of the birth of Jesus.

The surprise is the celebration this year does not end until Sunday February 15<sup>th</sup> – because Ash Wednesday will fall on February 18<sup>th</sup> this year. Can you imagine leaving our decorations up all of January and for several weeks into February?

My, how the neighbors would talk - - What are they doing? What is going on over there? Their tree is still up, AND LIT! The wreath is still on the door!

Who has decided when Christmas is over? The stores that have everything ½ price on December 26<sup>th</sup> and put the next group of red and green cards out as soon as possible for February and March? Do we feel pushed to that kind of pressure? Do what everyone else does.

As Christians, we are called to be in the world but not of it. It is easy to follow the crowd. We all know how sometimes it is difficult to get up on Sunday morning to come to church when you know more than a few who are home in their jammies, lounging around. We hope they wonder what the pull for you is to want to come to church. We can pray they will have the courage to ask why.

We come to acknowledge the birth of a baby who was born to bring hope and salvation to all in the world. We come to learn more about this baby and how he lived his life. We come to enjoy the fellowship of those with like minds and to greet those who may be seeking the same pull you have.

“Do not be afraid,” the angels said, “I bring you good news and tidings of great joy.” Is Christmas – the celebration of the birth of the savior over yet? No, NEVER! It goes on, and on, and on. Continue to have a blessed and renewed New Year each day every day as you stand before our Lord. *Pastor Ginny*

## MONTHLY PRAYER FAMILIES

In FEBRUARY we will be praying for the following families each week.

**Feb 1:** The Weiser Family, The Wenz Family, The Wertz Family,  
The Wilburn Family

**Feb 8:** The Williams Family, The Younger Family, The Zahour Family,  
The Apgar Family

**Feb 15:** The Bastian Family, The Bellucci Family, The Bennighoff Family  
The Bentsen Family

**Feb 22:** The Berghold Family, The Binkley Family, The Bortz Family,  
The Bruchak Family

Are you trying to downsize?

Do you have too much around your house?

- Mugs, glasses, utensils, pots and pans,
- Furniture, towels and linens (gently used),
- Cleaning supplies, carpets

A mission of Wesley United Methodist Church for over 15 years, their disaster relief warehouse is in Hellertown. Everything they do is dependent upon donations. They offer what is in their storage building to vetted families who have been forced from their homes through abuse, by fire or flood at no charge.

### **Prayer Shawl Group News**

Our 2026 charity knit/crochet projects will be preemie hats for St. Luke's NICU and soap sacks for the homeless. There are copies of both knitted and crocheted preemie hat patterns on the table in the Narthex. Or if you prefer to pick your own pattern - there are lots of patterns online for preemie hats. You can use a soft acrylic or cotton for these hats – do not use wool or animal fiber.

Soap sacks are small bags in which you can store a bar of soap. The loop on top allows for hanging the soap to dry, and the fabric of the bag can act as a washcloth. There is a knitted and crocheted pattern available on the table in the narthex. Soap sacks are to be made with cotton yarn only.

In addition to our yearly charity project, we continue to make prayer shawls. There are always prayer shawls on hand – if you know of someone who could use a shawl or lap robe, please see Steph, Sandi, or Judy.

Plann Project/Monthly Working Sessions –Our February session will be held on Tuesday, February 17 at 1:30PM.

## **Parish Nursing Notes**

### **“Protecting Your Body during the Winter”**

February 2026

Peggy Saylor, MSN, RN

With the cold weather being upon us, it is important to protect your body against the plunging temperatures. As the temperature drops, we need to be mindful of how much time we are exposed to the elements, especially if one has an underlying cardiovascular disease or is an older individual. Prolonged exposure to the cold can affect the heart, brain and other vital organs. When exposed to the cold, we lose heat faster than our body can produce it. We lose heat through touching cold items, having cold wind touch our body or by evaporation which can occur by sweating during exertion such as shoveling snow. Hypothermia can occur if our body's core temperature drops below 95 degrees Fahrenheit as our blood vessels constrict. Symptoms can include shivering, slurred speech, slow breathing, drowsiness and a puffy or pale face. Hypothermia is a medical emergency and requires immediate medical help. If you can't get immediate medical care, you can help to restore body heat by going to a warm room, removing any wet clothing and warming the area with blankets and having warm drinks but avoid alcohol.

If frostbite occurs, the symptoms can include numbness, pale skin, redness or pain. Avoid rubbing the area. Try putting the area in WARM water but not hot water. You can also place the area in other parts of the body such as putting your hands in your armpits. Do not use heating pads as burns can occur. Dressing appropriately with scarves, gloves, hats and heavy coats and avoiding long periods in the cold can help to avoid both hypothermia and frost bite. Also, be sure to be cognizant of the effects of cold on the cardiovascular system as cold temperatures cause the blood vessels to constrict. This in turn increases our blood pressure which can lead to a stroke or heart attack. On a bright note, Spring starts on March 20!!!

## HOME HEALTH PRODUCTS FOR ENCAMPMENT RELOCATION PEOPLE

We are asking for Home Health Products to help those who are being rehoused from the encampments along Lehigh Valley Creeks.

Please do not think an extra-large size is better - it takes up too much room in a backpack.

Items needed in smaller containers:

Wash cloth, soothing cream, powder, shampoo, conditioner, bar soap, tooth brush and paste, lip balm, deodorant, razors, shaving cream, woman's products (pads and tampons)

Anything you use we missed on the list.

### WOMEN OF THE EVANGELICAL LUTHERAN CHURCH

[WELCA]



On Sunday, January 11<sup>th</sup> after enjoying Soup, Sandwiches, and Dessert, our group had the privilege of a presentation on the bookends of Jesus life with **Mary - Madonna and Pieta** by Judith Wanfried. It was a very informative and enjoyable presentation on this artwork.



Our monthly meeting was held on Wednesday, January 14, 2026.

- Our Bible study was *Now let us pray Session one Praying with our bodies* by Liv Larson Andrews which focused embodies practices of prayer.
- The **2026 Gather Bible study topics**
  - **Spring** (March/April/May 2026): “I AM: God’s holy name and promise,” a three-part Bible study by the Rev. Dr. Hannah Hawkinson. The issue also includes a bonus intergenerational Bible study/devotional, “Paul’s letters and yours,” by the Rev. Angela Shannon.
  - **Summer** (June/July/August 2026): “I am worthy,” by the Rev. Sara Olson-Smith.
  - **Fall** (September/October/November 2026): “Bold faith on an unexpected journey,” by the Rev. Tiffany Chaney.
  - **Winter** (December 2026/January/February 2027): Advent devotional (author details to come) and a two-part study by Wanda Frenchman (topic to come).

ALL WOMEN ARE INVITED TO THESE EVENTS  
NEWS FROM THE NEPA WELCA - - - - - **SAVE THE DATE**

- The Flame, NEPA WELCA news publication, was mailed on January 15, 2026.
- Spring Justice Event, April 11, 2026, Hope Cherryville on Missing and Murdered Indigenous Women and Way of Peace.
- 36<sup>th</sup> Annual Convention of the NEPA Women of the ELCA, June 13, 2026, St. Paul’s Lutheran Church, Breinigsville. Topic: *Finding Your Inner Self*.

Join us for our next meeting, Wednesday, February 11, 2026, at 9:30 a.m. for a time of fellowship and the second session of *Now let us pray. Praying with the body of the Earth*.

**UPCOMING EVENTS FROM  
THE FELLOWSHIP COMMITTEE**

February 8th – Potluck 11:30 am  
February 20th – Pizza & Movie Night

## THANK YOU

To my wonderful friends of the prayer shawl committee. I want to thank you all for the beautiful shawl that was made for me. It is perfect. The color is perfect! I love it, it's so beautiful. I've been using it quite a bit, with some of those chilly nights. Again, thank you so much, I love it! Love, Melanie.

Thank you to all who wished me a Merry Christmas and Happy New Year. My welcome here has been nothing short of extraordinary. I appreciate each one of you. Pastor Ginny

To The Members and Friends of St. Paul's,

Thank you so much for the wonderful luncheon you gave me in celebration of my retirement. Thank you to the council for planning it. To Linda from A & L Catering for preparing the food. To Steph for presenting me with the roses and to all who contributed to the purse collected for me given by Sandi and the cards and gift cards I received.

After 22 years, 4 months and 12 days I have gotten to know a lot of friends at St. Paul's and work with a lot of great people and Pastors. You have been a part of my life for so long, it is hard to say goodbye. I thank the personnel committee at that time for giving me the opportunity to learn and improve my skills. Thank you, Sharon, for filling in for me when I was out on vacation or surgeries. We helped each other to learn new ways of doing things on the computer.

It is time to close that chapter in my book and move on. You all have been wonderful. Thanks for including Jim in this celebration. We are both looking forward to relaxing and enjoying the rest of our lives.

I know I am leaving the church office in good hands with Pastor Ginny, Jennifer, Janine and Sandi. Take care of yourselves. I will miss you.

God Bless,  
Cindy



	2 Martine Otto 5 Dick Steltz 8 Zack Dimovits 9 Avery Thompson Rosalie Gallagher George Sanchez 10 Tom Kellog 12 Lacey Edwards Lillian Sicher	14 Mary Schneider 17 Cindy Mount 18 Denise Trainor 21 James Eisenhard Jr 24 Mark Maslany
--	--	--

# **ALTAR GUILD, COMMUNION ASSISTANTS AND READERS ARE NEEDED**



We are in need of people to help with the 10:30AM worship service – specifically Altar Guild, Communion Assistants, and Readers.

For Altar Guild, you would serve approximately every 6 weeks. Altar Guild is responsible for coming to church a half hour early and setting up the altar for communion – i.e. placing

the linens, wine, and grape juice on the altar, preparing the bread, and placing trays of communion cups in the sanctuary. At the end of service, Altar Guild removes everything from the altar, including fresh flower bouquets, waters them, washes the communion-ware and puts it away. You would be working with another Altar Guild member until you feel comfortable.

As a Communion Assistant, you would serve approximately every 6 weeks. Communion Assistants assist during communion –usually pouring the grape juice while the lay assistant handles the wine.

As Reader, again, you would serve every 6 weeks by reading the lessons during the service. Readers are asked to move toward the mic during the

last verse of the hymn, so they are already in place when it is time to read the lessons.

Currently, many of our lay assistants are serving triple duty and are scheduled multiple times a month - because there are not enough readers and communion assistants. Please consider helping out in one of these roles. Even if you can only volunteer at certain times of the year, the scheduler can work around and accommodate busy and varied schedules. Thank you for your prayerful consideration to assist in worship. If you are interested in helping, please contact Steph Wagaman at 610-395-0355, [stepbillwagaman@rcn.com](mailto:stepbillwagaman@rcn.com); or call the church office at 610-398-7000.

## SIGN-UP SHEETS FOR 2026 BULLETIN & ALTAR FLOWER SPONSORSHIPS

We are in need of bulletin sponsorships for 2026. The price is \$20.00. Call the church office to pick a date to sponsor or check the bulletin board for available dates. Fill out the **white** slip with your name, date you are sponsoring and the wording and place it in the folder under the signup sheet.

Altar Flower Sponsorships are: one vase is \$24.00 or both vases are \$48.00. If you are sponsoring both vases, **PLEASE** sign your name to **BOTH LINES**. Fill out the **blue** slip with your name, date you are sponsoring and the wording and place it in the folder under the signup sheet. Call the church office to pick a date to sponsor or check the bulletin board for available dates.

## CARD MINISTRY



Here at St. Paul's we send cards to members of the congregation who are ill or in need of a cheerful word. These cards are on the table in the narthex. When you are here on a Sunday, or during the week, check the table to see if there is a card. Please sign your name and help bring a smile to a fellow member.

# HOSPITALIZED?

Due to the changes in the Chaplin's offices at our local hospitals, the Hospital Code number we have been using, 321 cannot be used to identify our congregation. They do not have the volunteers needed to keep the office staffed to notify or accept calls regarding admissions.

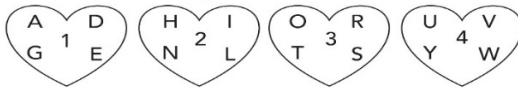
Please call the office at St Paul's if you want us to know of any hospitalizations. 610-398-7000

## Puzzle!

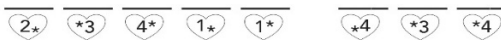
We see hearts everywhere and love sharing cards and greetings with friends and family.

Use the code to discover a special message from God — perfect for any day, any month.

CODE:



"



Jeremiah 31:3

Answer: "I have loved you with an everlasting love."

**DEADLINE FOR THE NEXT  
NEWSLETTER IS  
FEBRUARY 15, 2026**

**PLEASE HAVE YOUR  
ARTICLES SUBMITTED TO  
THE CHURCH OFFICE  
BY THIS DATE.**



---

**CHURCH OFFICE: 610-398-7000  
HANDICAPPED ACCESSIBLE  
EMAIL: [office@stpaulsbyville.org](mailto:office@stpaulsbyville.org)  
Website: [www.stpaulsbyville.org](http://www.stpaulsbyville.org)**

**STAFF**

Interim Pastor.....The Rev. Ginny Goodwin  
Organist/Choir Director ..... Ms. Judy Noll  
Handbell Director..... Mr. Richard Steltz  
Parish Secretary ..... Mrs. Jennifer Doyle